

# RG-EG710XS

## Reyee 10-Port High-Performance Cloud Managed Router for Up to 700 Clients



### Highlights

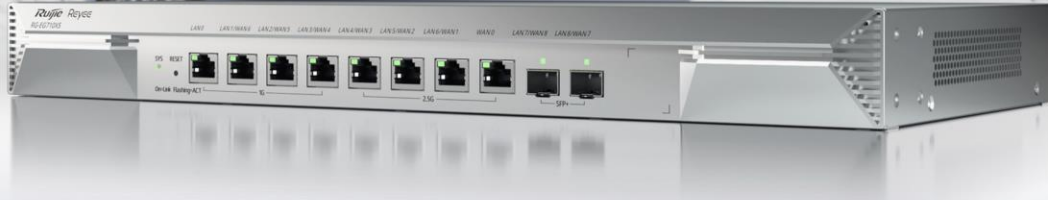
- High capacity supporting up to 700 concurrent clients.
- 3 Gbps throughput, high-performance router for office networks.
- Powerful VPN with 300 tunnels for branches and remote employees.
- Efficient bandwidth management based on applications and users.
- Multi-WAN, intelligent load balancing.
- Lifetime management on Ruijie Cloud anytime, anywhere.

# Highlight Features

## Unleashing Speed, Empowering Connections

High-Speed Business Router for Up to 700 Clients

RG-EG710XS



700  
Concurrent Clients



300  
VPN Tunnels



3 Gbps  
Throughput



Multi-WAN  
Load Balancing

## Speed. Security. Power.

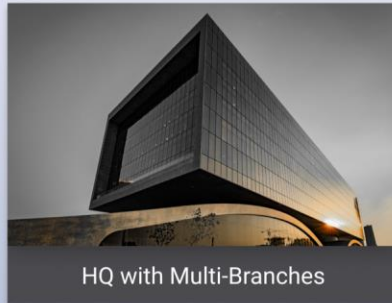
RG-EG710XS Can Fit Diverse Networking Scenarios with Ease

Scenarios

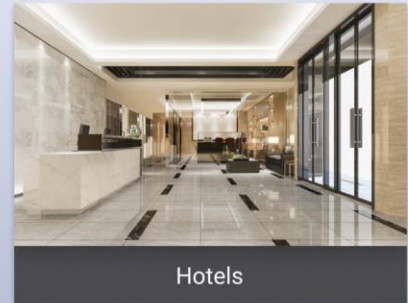
Concurrent Clients



Offices



HQ with Multi-Branches



Hotels



Authentication  
and Authorization



VPN  
IPsec, OpenVPN,  
L2TP, PPTP, WireGuard



Customized  
Portal Page

## Speed. Security. Power.

RG-EG710XS Can Fit Diverse Networking Scenarios with Ease

Scenarios

Concurrent Clients

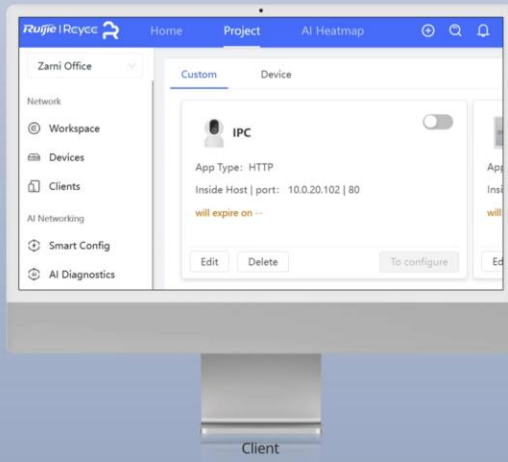


Connect Up to **700** Clients

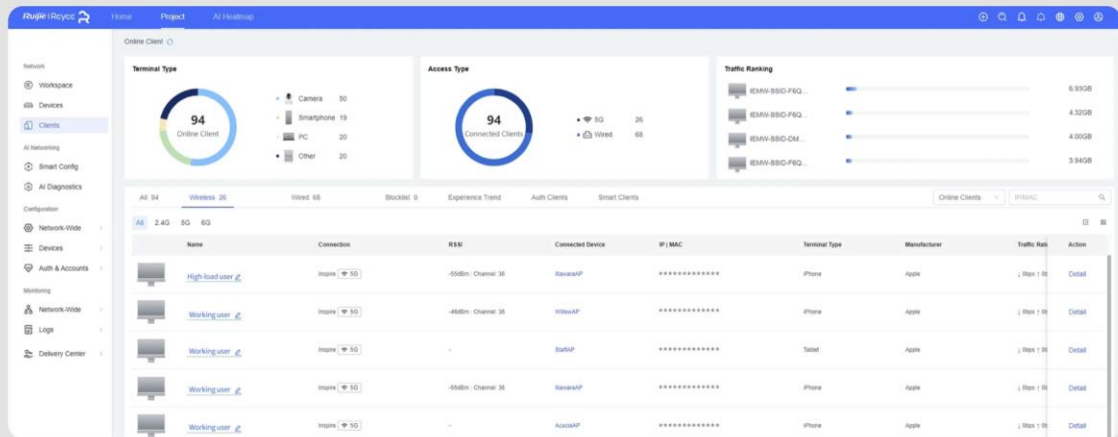
# Highlight Features

## Easy NAT Traversal

The management console uniformly displays all third-party devices, enabling easy intranet access and one-click links to their web interfaces.



## Client Recognition & Flow Control



## Cloud, Make Your Business Easy

- Self-organizing network
- Scenario-based configuration guide
- Marketing portal authentication
- Quickly advanced service setup by APP
- Remote management based on Ruijie Cloud and Ruijie Reeye App



# Hardware Specifications

Model	RG-EG710XS
<b>Port Specifications</b>	
Total number of optical ports	2
Total number of RJ45 ports	8
Number of 10/100/1000BASE-T ports	4
Number of 10/100/1000/2500BASE-T ports	4
Number of 10GE SFP+ ports	2
Maximum number of LAN ports	9
Maximum number of WAN ports	9
Number of fixed LAN ports	1
Number of fixed WAN ports	1
Number of LAN/WAN ports	8
LEDs	1 x system status LED 10 x Ethernet port LEDs
Reset button	1
<b>System Specifications</b>	
CPU	Quad-core processor, 1.8 GHz clock frequency per core
Flash memory	256 MB
RAM	2 GB
<b>Power Supply and Consumption</b>	
Power supply	Fixed power supply
Maximum power consumption	14 W
<b>Dimensions and Weight</b>	
Package dimensions (W x D x H)	605 mm x 480 mm x 315 mm (23.82 in. x 18.9 in. x 12.4 in.)
Product dimensions (W x D x H)	440 mm x 210 mm x 43.6 mm (17.32 in. x 8.27 in. x 1.72 in.)
Shipping weight	3.5 kg (7.72 lbs)

# / Hardware Specifications

Model	RG-EG710XS
Weight	2.65 kg (5.84 lbs)
<b>Environment and Reliability</b>	
Cooling	Natural cooling
Fan	Fanless design
Mounting options	Rack Note: The device occupies 1 U of the rack space.
Operating humidity	10% RH to 90% RH (non-condensing)
Operating temperature	0°C to 40°C (32°F to 104°F)
Storage humidity	5% RH to 95% RH (non-condensing)
Storage temperature	-40°C to +70°C (-40°F to +158°F)
Surge protection	Service port: ±6 kV for common mode Power connector: ±6 kV for common mode and ±6 kV for differential mode

# Software Specifications

Model	RG-EG710XS
<b>System Performance Capacity</b>	
<b>Maximum number of concurrent sessions</b>	150000
<b>Recommended number of concurrent clients</b>	700
<b>Throughput</b>	3000 Mbps
<b>Basic Configurations</b>	
<b>AC mode</b>	Yes
<b>Automatically identifying the Internet access mode and obtaining IP addresses</b>	Yes
<b>Automatically learning the PPPoE username and password of other routers</b>	Yes
<b>Configuration backup</b>	Yes
<b>Internet access mode</b>	Static IP address Static IPv6 address Dynamic IP address Dynamic IPv6 address PPPoE
<b>Local upgrade</b>	Yes
<b>Log upload</b>	Yes
<b>Online upgrade</b>	Yes
<b>Restoring factory defaults</b>	Yes
<b>System language</b>	English, Chinese, Turkish, Arabic, Vietnamese, Thai, Indonesian, Latin American Spanish, Brazilian Portuguese, Russian, French, German, European Spanish, Italian, and Polish
<b>Authentication</b>	
<b>Portal authentication</b>	Yes
<b>One-click authentication</b>	Yes
<b>Password authentication</b>	Yes

## Software Specifications

Model	RG-EG710XS
SMS-based authentication	Yes
Voucher authentication supported by Ruijie Cloud portal page	Yes
Cloud portal authentication	Yes
Local portal authentication	Yes
QR code authentication	Yes
Custom portal page	Yes
Account-based authentication supported by Ruijie Cloud portal page	Yes
CHAP, MS-CHAPv1, MS-CHAPv2	Yes
Delivery through Ruijie Cloud portal page	Yes
802.1X authentication	Yes
MAC address-based authentication	Yes
PPPoE server	Yes
Number of accounts supported by the PPPoE server	700
Number of concurrent clients supported by the PPPoE server	500
RADIUS flow control authorization	Yes
PAP	Yes
RADIUS authentication	Yes
RADIUS client	Yes
RADIUS accounting based on time or traffic	Yes
RADIUS flow control authorization	Yes
RADIUS proxy server	Yes
RADIUS traffic quota authorization	Yes

## Software Specifications

Model	RG-EG710XS
RADIUS user group authorization	Yes
Third-party authentication	Yes
<b>Ethernet Interface</b>	
Avoiding IP address conflicts on WAN interfaces	Yes
Multiple IP addresses on a WAN port	Yes
Load balancing	Yes
MAC address cloning	Yes
Multiple WAN interfaces on the same network segment	Yes
PPPoE clients	Yes
Scheduled PPPoE reconnection	No
<b>Ethernet Switching</b>	
Configuring multiple VLANs upon configuration delivery	No
Link aggregation	No
LLDP	No
VLAN	Yes
Maximum number of VLANs	128
VLAN configuration supported on LAN ports	Yes
Super-VLAN	No
Configuring the same VLAN tag for multiple WAN ports	No
VLAN priority	Yes
Number of MAC address entries to be filtered	512
<b>Gateway Features</b>	

# Software Specifications

Model	RG-EG710XS
WAN failover	Yes
Application priority	Yes
Application recognition	Yes
Behavior management	Yes
QoS	Yes
Time-based blocking policy	Yes
IP address-based blocking policy	Yes
Website filtering: custom URL	Yes
Traffic audit	Yes
URL audit log	Yes
Audit log server	Yes
Audit log storage	Yes
Uploading audit logs to a server	Yes
<b>IP Routing</b>	
Application-based routing	Yes
Bandwidth aggregation	Yes
BGP	Yes
BGP4	Yes
BGP4+	Yes
ECMP	No
IPv4 static route	Yes
IPv6 PBR	Yes
Route selection based on national address database	Yes
IPv6 static route	Yes

## Software Specifications

Model	RG-EG710XS
IS-ISv4	No
IS-ISv6	No
Load balancing based on flows	Yes
Load balancing based on source IP addresses	Yes
Load balancing based on the interface weight	Yes
Route selection by link quality	Yes
OSPFv2	Yes
OSPFv3	Yes
RIP	Yes
RIPng	Yes
<b>IP Service</b>	
3322.org	Yes
ALG	Yes
ARP binding	Yes
Maximum number of ARP entries	2048
Proxy ARP	No
Cloudflare	Yes
DHCP client	Yes
DHCP server	Yes
DHCP relay	No
Option 43	Yes
Option 138	Yes
Static/Dynamic NAT	Yes

## Software Specifications

Model	RG-EG710XS
NAT-PT	No
NAT loopback	Yes
DNS client	Yes
DNS proxy	Yes
DNS server	Yes
No-IP DNS	Yes
GRE tunnel	No
IPTV	Yes
IPv4 ping	Yes
IPv6	Yes
IPv6 ping	Yes
Number of port mapping entries	512
Port mapping	Yes
DDNS	Yes
Ruijie DDNS	Yes
Alibaba Cloud DDNS	Yes
UPnP	Yes
<b>MPLS</b>	
MPLS L2VPN	No
<b>Network Management and Monitoring</b>	
Web management	Yes
Ruijie Cloud management	Yes
Management on Ruijie Reyee App	Yes

# Software Specifications

Model	RG-EG710XS
Remotely monitoring devices through Ruijie Reyee App	Yes
Restarting devices through Ruijie Reyee App	Yes
Upgrading device software version through Ruijie Reyee App	Yes
Fault diagnosis	Yes
FTP client (IPv4 address)	No
FTP server (IPv4 address)	No
TFTP client (IPv4 address)	Yes
TFTP server (IPv4 address)	No
HTTPS login	Yes
NTP client	Yes
NTP server	No
Scheduled device restart	Yes
SNMPv1, v2c, and v3	Yes
SON	Yes
SSH	No
Telnet	No
Web login information	Default IP Address: 192.168.110.1 Default Password: admin
Maximum number of managed devices (router mode)	AP and NBS series: 750 ES series: 128 Note: The maximum number of managed devices varies with each device series.
Maximum number of managed devices (AC mode)	AP and NBS series: 750 ES series: 128 Note: The maximum number of managed devices varies with each device series.
<b>Reliability</b>	

# Software Specifications

Model	RG-EG710XS
Stacking	No
VRRP	No
SD-WAN	
SD-WAN	Yes
SD-WAN performance	1100 Mbps
Number of tunnels supported by SD-WAN	1500
Maximum number of SD-WAN branches	300
Active/Standby mode (automatically switching to the standby interface when the active interface fails)	Yes
Bypass networking for a device in AP mode	No
Centralized traffic forwarding policy	Yes
Multi-WAN link bundling efficiency (lab data)	≥ 80%
Security	
ACL	Yes
IPv6 ACL	Yes
DHCP snooping	No
Malformed packet attack defense	Yes
Fragmentation attack defense	Yes
Teardrop attack defense	Yes
LAND attack defense	Yes
SYN flood attack defense	Yes
Smurf attack defense	Yes
IP attack defense	Yes

## Software Specifications

Model	RG-EG710XS
Disabling ping	Yes
Stateful ACL	Yes
IP-MAC binding	Yes
Network sharing prevention	Yes
Security log	Yes
Security zone	Yes
User group-based connection limiting	Yes
VPN	
IPsec VPN	Yes
IPsec VPN bandwidth	1100 Mbps
Maximum number of branches in IPsec VPN networking	300
L2TP VPN	Yes
L2TP VPN bandwidth	1100 Mbps
Maximum number of branches in L2TP VPN networking	300
OpenVPN	Yes
OpenVPN bandwidth	350 Mbps
Maximum number of branches in OpenVPN networking	300
PPTP VPN	Yes
PPTP VPN bandwidth	1700 Mbps
Maximum number of branches in PPTP VPN networking	300
SSL VPN	No
Easy VPN 1.0	No

## Software Specifications

Model	RG-EG710XS
Number of VPN accounts for L2TP, PPTP, and OpenVPN	700
WireGuard server	Yes
WireGuard client	Yes
WireGuard performance	1100 Mbps
Number of concurrent tunnels supported by the WireGuard server	300
WLAN	
Maximum number of APs (AC mode)	750
Maximum number of devices that can be managed	128
Wireless Intelligent Optimization (WIO)	Yes

## Package Contents

Model	RG-EG710XS
<b>Accessories</b>	
<b>Rack-mount bracket</b>	2
<b>Power cord</b>	1 x 1.8 m (70.86 in.)
<b>Power cord retention clip</b>	1
<b>Rubber pad</b>	4
<b>Screw</b>	8 x M4 x 8 mm cross recessed countersunk head screws
<b>Manual</b>	
<b>User Manual</b>	1
<b>Warranty Card</b>	1

*Ruijie* | REYEE

 Redefine your easy network



**Ruijie Networks Co., Ltd.**

Official Website: <https://Reyee.Ruijie.com>